

IB02: Embedded ADSL module, Industry ADSL modem, broadband access modem module

The IB02 module supports full rate, auto-adaptive ADSL, ADSL2, ADSL2+ standards, can automatically identify and automatically switches between the above standard, the highest upstream rate of 1Mbps uplink, the highest downstream rate of 24Mbps (ADSL2/2+), the maximum transmission distance can reach 5.5km.

The IB02 module built-in Linux kernel based software, supports multi-VCI/VPI bridging mode and routing mode, IB02 also supports multiple connection protocols, supports HTTP/TELNET/CLI configuration, CLI configuration suitable for embedded systems under serial ports.

Feature:

1. The IB02 uses the powerful MIPS32 microprocessor, basic frequency of 240MHz, Broadcom main chip platform.
2. Efficient use of DC/DC circuit design, 5VDC power input, under the work condition of 2.3W. Standby mode is only 2W, 50% lower power consumption than traditional ADSL MODEM.
3. Structure Size: 72x60x14 mm.
4. Pin interface: 2X15 PIN(2.5mm pitch) single row of double gold pin

Communication Interface:

1X 10 / 100Mbps auto-sensing Ethernet interface
RS232 interface (CLI interface, TTL level)
Equipped with multiple I / O interface
DSL Interface : 2 Pin header

Protocol standard:

Compliant with ADSL Standard

- Full-rate ANSI T1.413 Issue 2
- G.dmt (ITU G.992.1)
- G.lite (ITU G.992.2)
- G.hs (ITU G.994.1)

Capable of ADSL2 Standard

- G.dmt.bis (ITU G.992.3) Annex A, L and M
- G.lite.bis (ITU G.992.4)

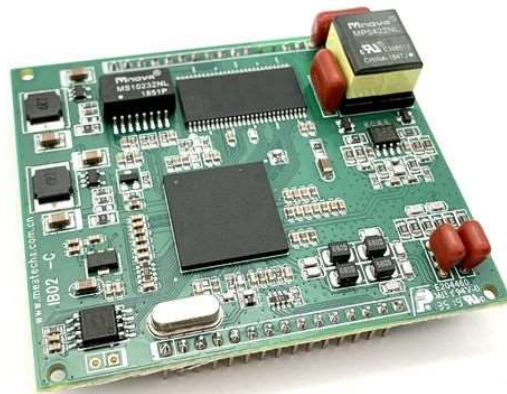
Capable of ADSL2+ Standard

- G.dmt.bisplus (ITU G.992.5)

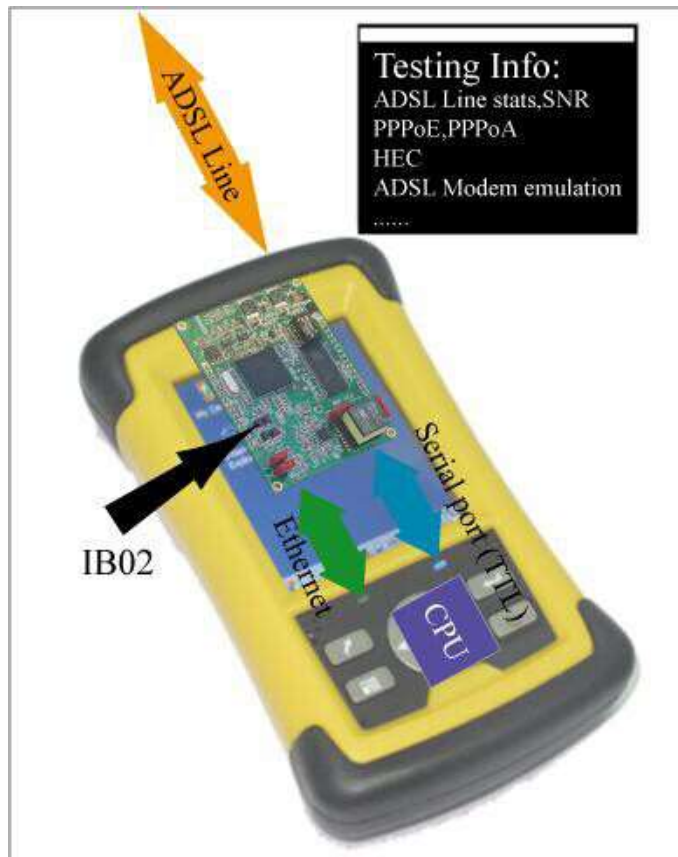
Supports up to 8PVCs
VC and LLC Multiplexing
ATM Adaptation Layer Type 5 (AAL5)
Integrated ATM AAL5 support (UBR,CBR,VBR,VBR-rt, and VBR-nrt)
OAM F4/F5

Application:

Handheld DSL tester equipment
Railway video capture;
Access control / security control system (card reader, biometric authentication device)



Product Application Diagram - handheld test equipment:



Order Information

Product Description
Embedded ADSL module

Order Code
IB02